



Hands-Free Interface (HFI) Firmware Upgrade Guide

Table of Contents

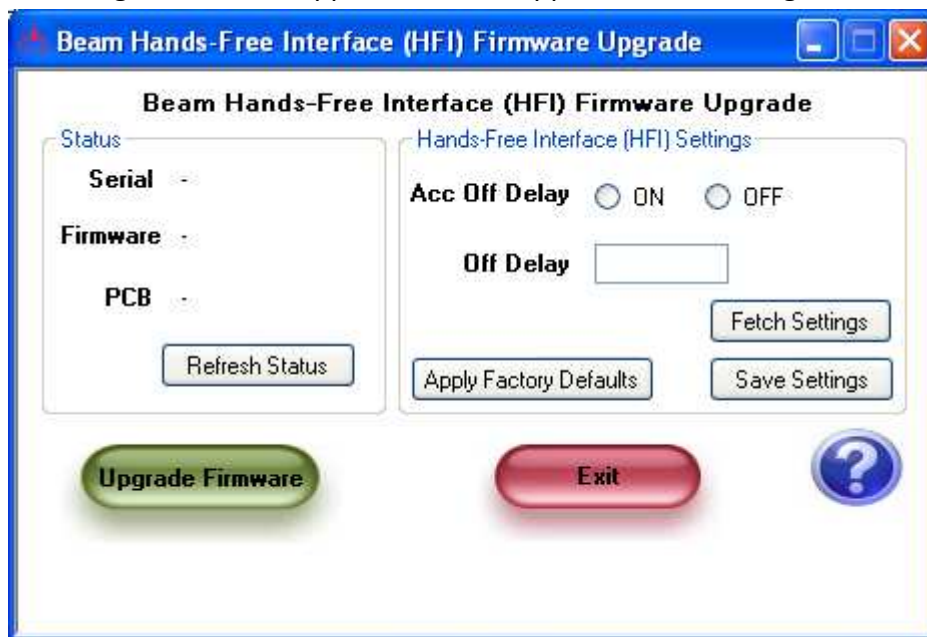
Requirements	3
Procedure to upgrade firmware.....	4
Settings	7
Fetch Settings	7
Save Settings.....	7
Factory defaults Button.....	7
Additional functionality of the upgrade tool.....	8
Hands-Free Status Button	8

Requirements

- **.NET 2.0** or higher is required to be installed prior to running the application.
- PC with Windows 2000 sp4/windows XP/windows VISTA
- **A RJ45 to serial cable**
- Hands-free module
- Power supply

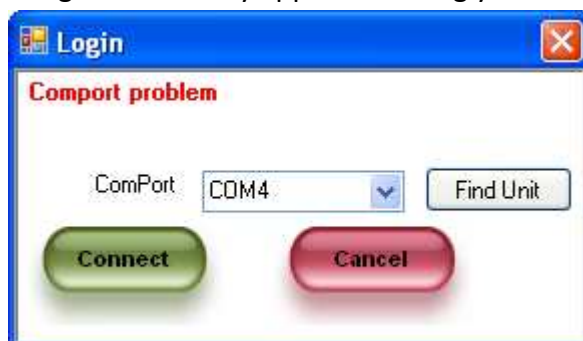
Procedure to upgrade firmware

1. Undertake the following before starting the application
 - Connect power to the Hands-free Interface
 - Attach the Hands-Free Interface (HFI) to the computer via RJ45 to serial cable
2. Run the application by clicking on the “**HFI firmware upgrade.exe**” file. The following window will appear once the application is running.



If you are running the application in windows VISTA, a security warning may appear.

3. To upgrade the firmware click on the “**Upgrade Firmware**” button.
4. A login screen may appear allowing you to select a COM port.



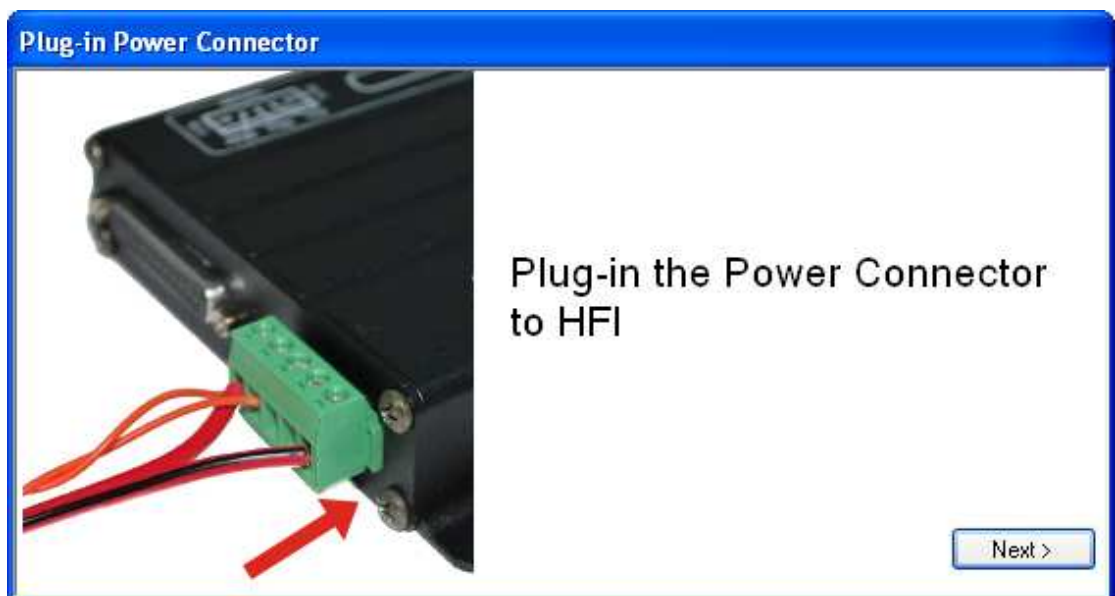
If you are not sure what port you are using, you may click on the “**Find Unit**” button to find the unit on an available port automatically.

You may also be asked to enter a PIN number if your PIN number is different to the default PIN (3170).

5. You will be prompted to unplug the Power connector from the HFI.



6. After a few seconds another prompt will appear to reattach the Power Connector.

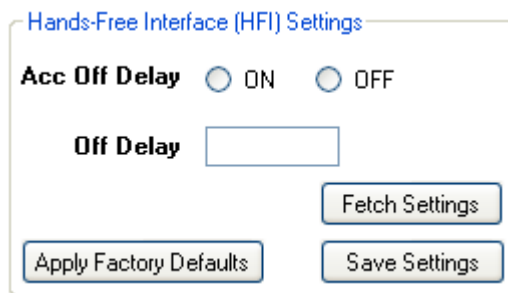


7. Once the unit is programmed a message will appear stating the result of the process.



8. The Hands-Free Interface (HFI) Status fields will automatically be updated after reprogramming the firmware.

Settings



Hands-Free Interface (HFI) Settings

Acc Off Delay ☒ ON ☐ OFF

Off Delay

Fetch Settings

Apply Factory Defaults Save Settings

HFI firmware upgrade tool also allows to view and save some settings. Currently only “Acc Off Delay” and “Off Delay” timing are available to view and configure.

Acc Off Delay: This allows to let the unit to go to sleep mode once the accessories has gone off.

Off Delay: This allows to configure time interval in minutes, HFI should go to sleep mode after, once the accessories has gone off.

Fetch Settings

Click “**Fetch Settings**” button to retrieve settings from the Hands-Free Interface.

Save Settings

Click “**Save Settings**” button to save settings from the Hands-Free Interface.

Factory defaults Button

Click “**Apply Factory Defaults**” button to reset the unit back to the factory defaults.

Additional functionality of the upgrade tool

Hands-Free Status Button

Click “**Refresh Status**” button to update the status of the Hands-Free Interface (HFI).